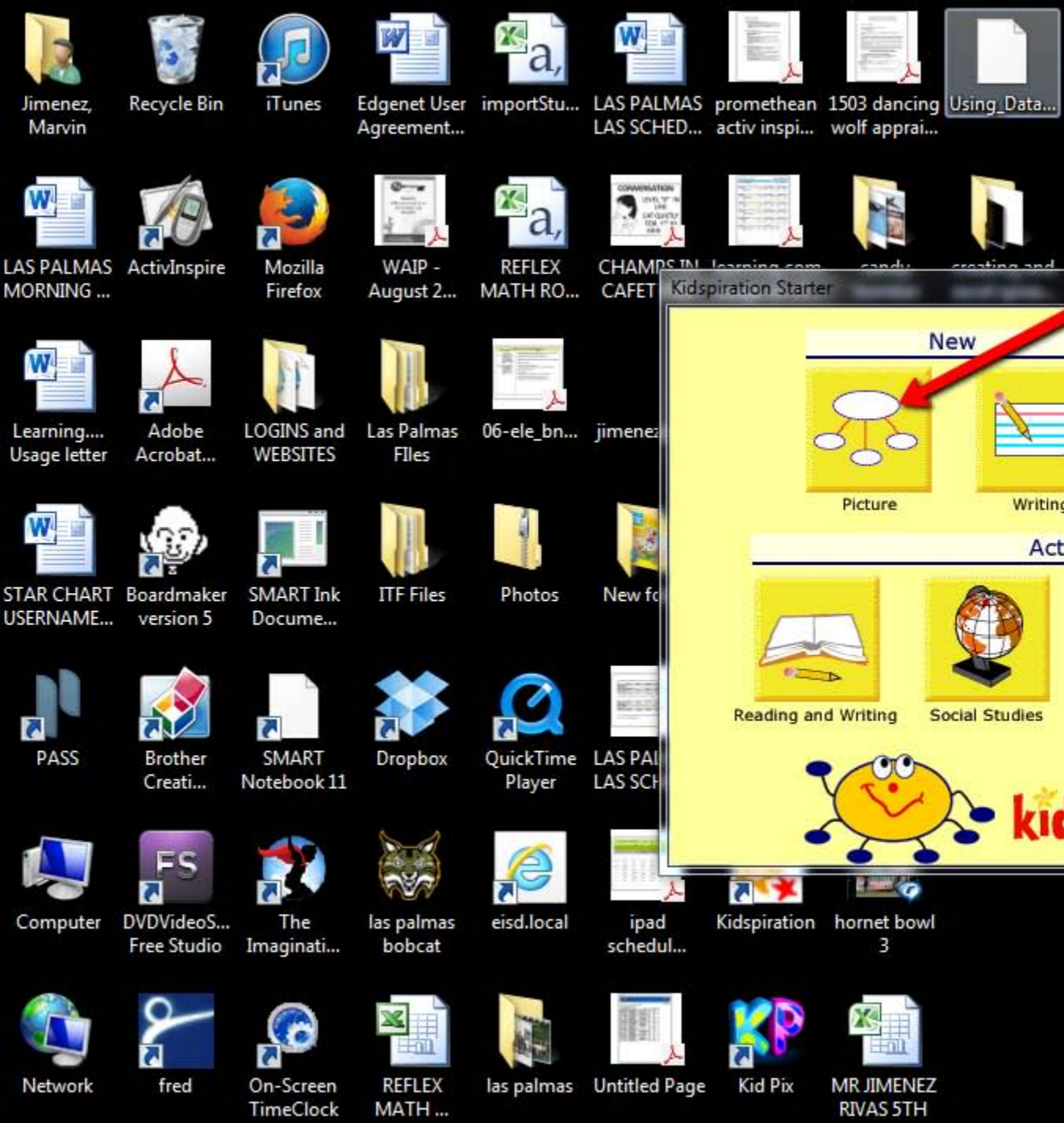


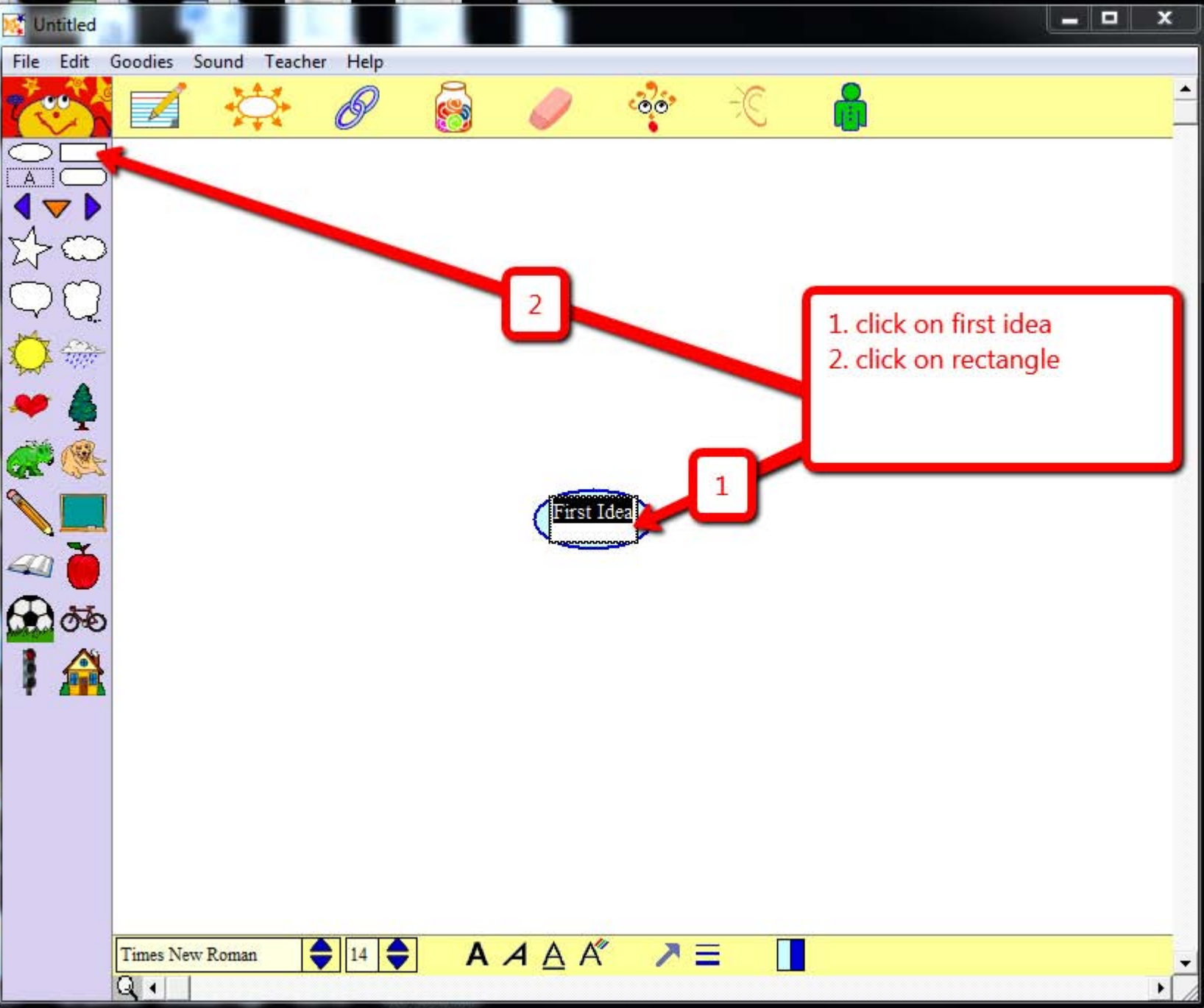
click on kidspiration





click on picture

A screenshot of the 'Kidspiration Starter' application window. The window has a yellow background and is divided into sections. At the top, there are two columns: 'New' and 'Open'. Under 'New', there are two icons: 'Picture' (a tree diagram) and 'Writing' (a pencil on a notepad). Under 'Open', there is one icon: 'Open a file' (a folder with papers). Below these is a section titled 'Activities' with four icons: 'Reading and Writing' (an open book), 'Social Studies' (a globe), 'Science' (a microscope), and 'More...' (a stack of books). At the bottom of the window, there is a cartoon character of a yellow smiley face with arms and legs, followed by the 'kidspiration' logo and a 'Quit' button. A red arrow from the text box above points to the 'Picture' icon.



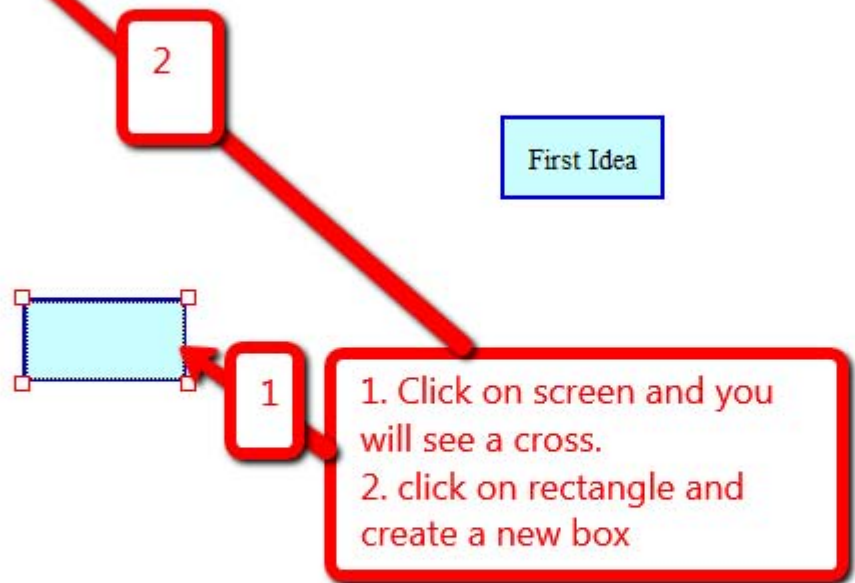
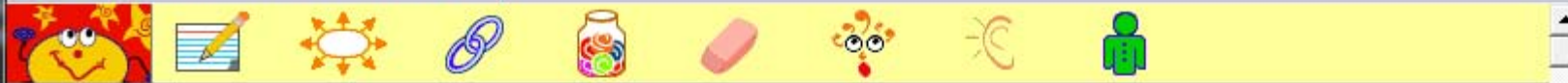
1. click on first idea
2. click on rectangle

2

1

First Idea

Times New Roman 14 A A A A



Untitled

File Edit Goodies Sound Teacher Help

add all your boxes

First Idea

Times New Roman 14

Untitled

File Edit Goodies Sound Teacher Help

ADD ALL YOUR DATA TO ALL YOUR BOXES

CHANGES TO LAND

WEATHERING

EROSION

DEPOSITION

Times New Roman 14

Docume...

SMART Notebook 11

Drop

The Imaginati...

las pa bob

On-Screen TimeClock

REF MATH

Untitled

File Edit Goodies Sound Teacher Help

1. click on a box and
2. click the link

2

1

CHANGES TO LAND

WEATHERING

EROSION

DEPOSITION

Times New Roman 14

RIVAS 5TH

Untitled

File Edit Goodies Sound Teacher Help

click to the box
you like to link to .

```
graph TD; A[CHANGES TO LAND] --> B[EROSION]; B --- C[ ]; B --- D[ ]; C --- E[WEATHERING]; C --- F[ ]; E --- G[ ]; E --- H[ ]; B --- I[DEPOSITION]; B --- J[ ]; I --- K[ ]; I --- L[ ]
```

WEATHERING

EROSION

DEPOSITION

A A A A ↗ ≡

File Edit Goodies Sound Teacher Help

click on line arrow to change it to a single line with no arrow.

CHANGES TO LAND

WEATHERING

EROSION

DEPOSITION

Times New Roman 14

Untitled

File Edit Goodies Sound Teacher Help

```
graph TD; CL[CHANGES TO LAND] --- WEATHERING; CL --- EROSION; CL --- DEPOSITION; WEATHERING --- WEATHERING_BOX1[ ]; WEATHERING --- WEATHERING_BOX2[ ]; EROSION --- EROSION_BOX1[ ]; EROSION --- EROSION_BOX2[ ]; DEPOSITION --- DEPOSITION_BOX1[ ]; DEPOSITION --- DEPOSITION_BOX2[ ]
```

repeat to all

WEATHERING

EROSION

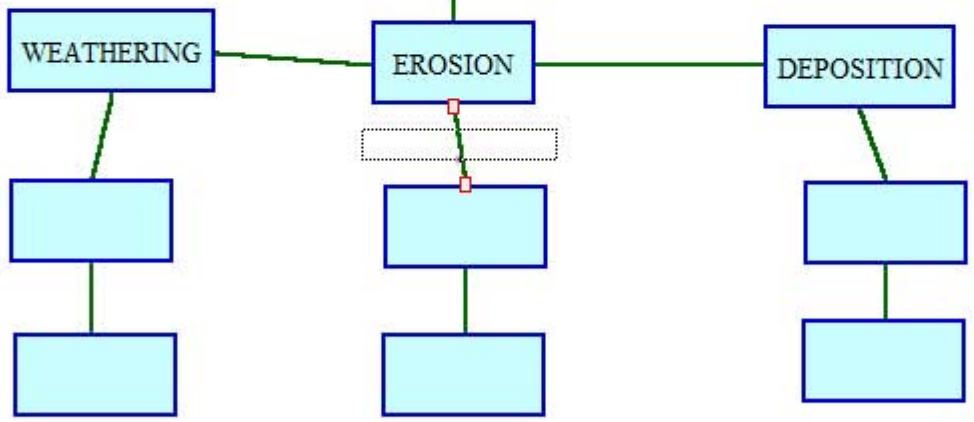
DEPOSITION

CHANGES TO LAND

Times New Roman 14



click file
click export
click jpeg



The image shows a software interface with a 'Save As' dialog box open over a flowchart. The dialog box is titled 'Save As' and shows the 'Documents' folder. It contains a table of files and folders, a 'File name' field with 'mr jimenez', and a 'Save as type' dropdown set to 'JPEG File (*.jpg;*.jpeg)'. Red arrows point from a list of instructions to the 'File name' field and the 'Save' button. The flowchart below has three main boxes: 'WEATHERING', 'EROSION', and 'DEPOSITION'. Each has two empty boxes below it. The 'EROSION' box is highlighted with a dashed border.

File name: mr jimenez

Save as type: JPEG File (*.jpg;*.jpeg)

Save

Cancel

1

2

1. save as your name
2. click save
3. raise your hand to save on usb.

WEATHERING

EROSION

DEPOSITION

Times New Roman 14